

SB818P|F

18" Subwoofer

- ▶ Compact, flyable design ideal for installs with floor space constraints or specific aesthetic demands.
- ▶ Powerful neodymium transducers with tremendous motor strength reduce system weight and increase output response at all output levels.
- ▶ Cable Chases for Concealed Wiring and Rigging
- ▶ 5.3" Voice Coil Driver

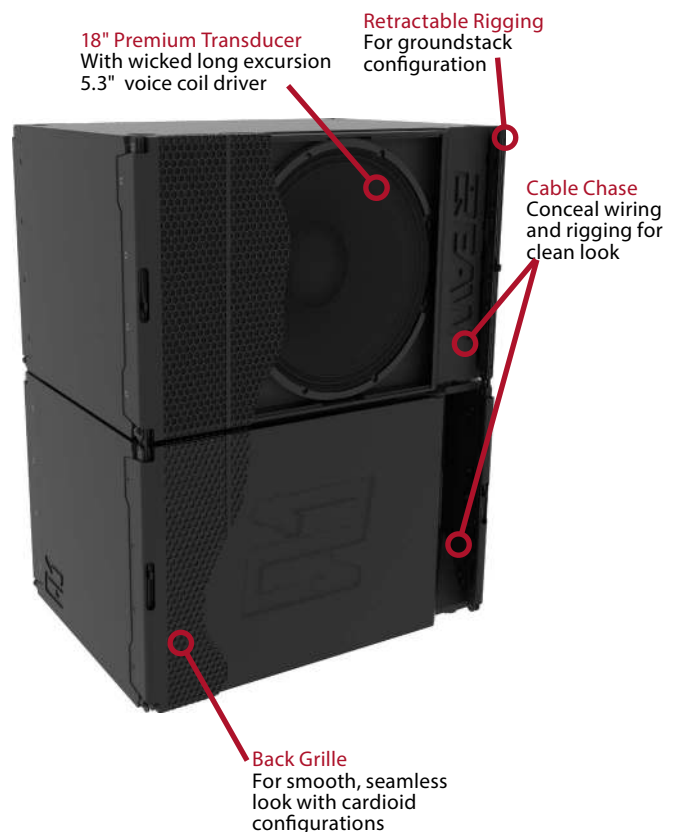


OVERVIEW

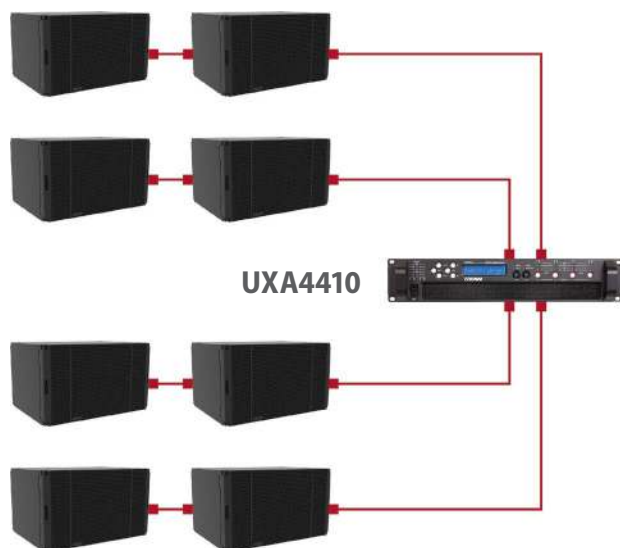
The SB818P|F is a high output, mid-size subwoofer system. SB series subwoofers are the choice where the best sonic performance, highest reliability, and most robust physical construction are required.

SB818P|F is direct radiating, with optimally tuned, vented enclosures. Top quality drivers, developed in concert with EAW engineering to provide the highest output and best sonic performance possible for a given form factor. It is designed to be used with today's sophisticated digital signal processing to optimize the LF response.

The versatile, all-purpose SB818P|F subwoofer works well with most full-range loudspeakers in a variety of applications. It is designed for permanent installation where the fatter-sounding output of an 18 inch driver is desired. Additionally, the SB818P|F is flyable and ultra-compact, ideal for installs or other applications with minimal floor space for subwoofers.

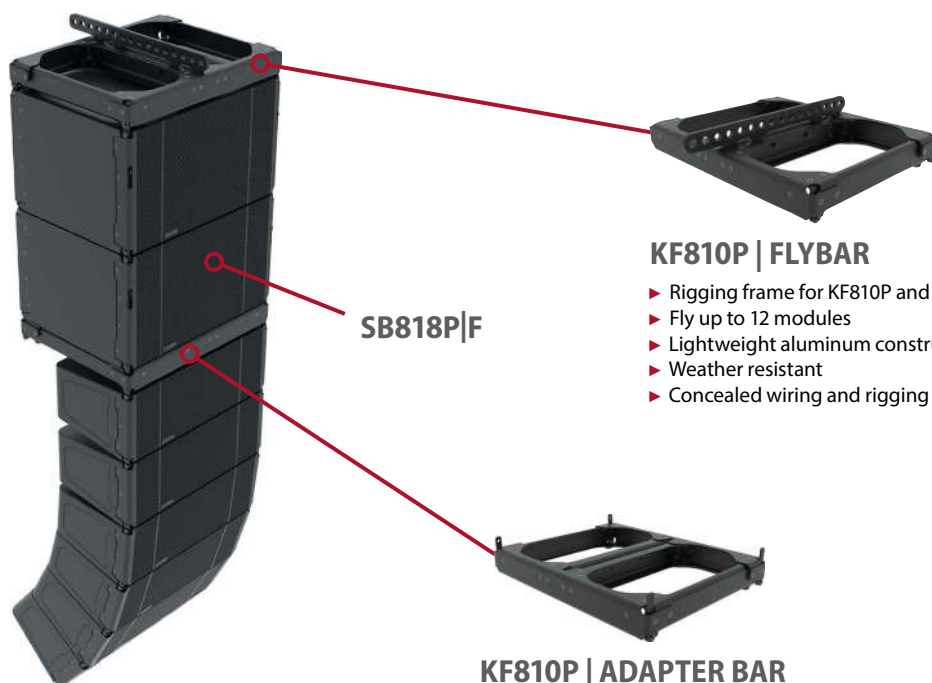


RECOMMENDED AMPLIFIER CONFIGURATION FOR SB818P-F



MODEL	PER CHANNEL	PER AMPLIFIER
UXA4810	Not Recommended	
UXA4406	1	4
UXA4410	2	8

RIGGING CONFIGURATION



SB818P|F

KF810P | FLYBAR

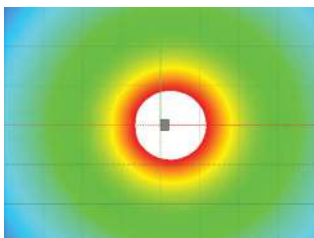
- ▶ Rigging frame for KF810P and SB818P
- ▶ Fly up to 12 modules
- ▶ Lightweight aluminum construction
- ▶ Weather resistant
- ▶ Concealed wiring and rigging

KF810P | ADAPTER BAR

- ▶ Couples KF810P to SB818P
- ▶ Doubles as a groundstack bar
- ▶ Lightweight aluminum construction
- ▶ Weather resistant
- ▶ Consistent visual with flybar

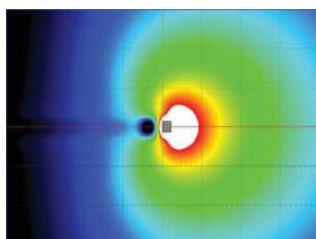
CARDIOID CONFIGURATIONS

OMNI



1 octave at 63Hz

CARDIOID



1 octave at 63Hz

TECHNICAL SPECIFICATIONS

SINGLE DRIVER 18" SUBWOOFER

PERFORMANCE

Max SPL	137dB ¹	
Operating Range	32Hz-124Hz ²	
Nominal Beamwidth³	Horz	Vert
	360°	360°
RMS Power Handling⁴	1800W	
Input Impedance LF⁵	8Ω	

CONFIGURATION

Subsystem	Transducer	Loading
LF	1x18", 5.3" VC	Vented
Operating Mode		
	Amplifier Channels	External Signal Processing
Single-amp	1	EAW DSP

PHYSICAL

Physical/Rigging	4-Point Integrated Rigging
Dimensions (H×W×D)	12.6" x 32.9" x 25.2" (493mm x 835mm x 640mm)
Net Weight	110lbs (50kg)
Shipping Weight	125lbs (57kg)
Flyware	KF810P FLYBAR/ADAPTERBAR - SEE RESOLUTION
Connector Type	Pluggable Phoenix Style

ORDERING DATA

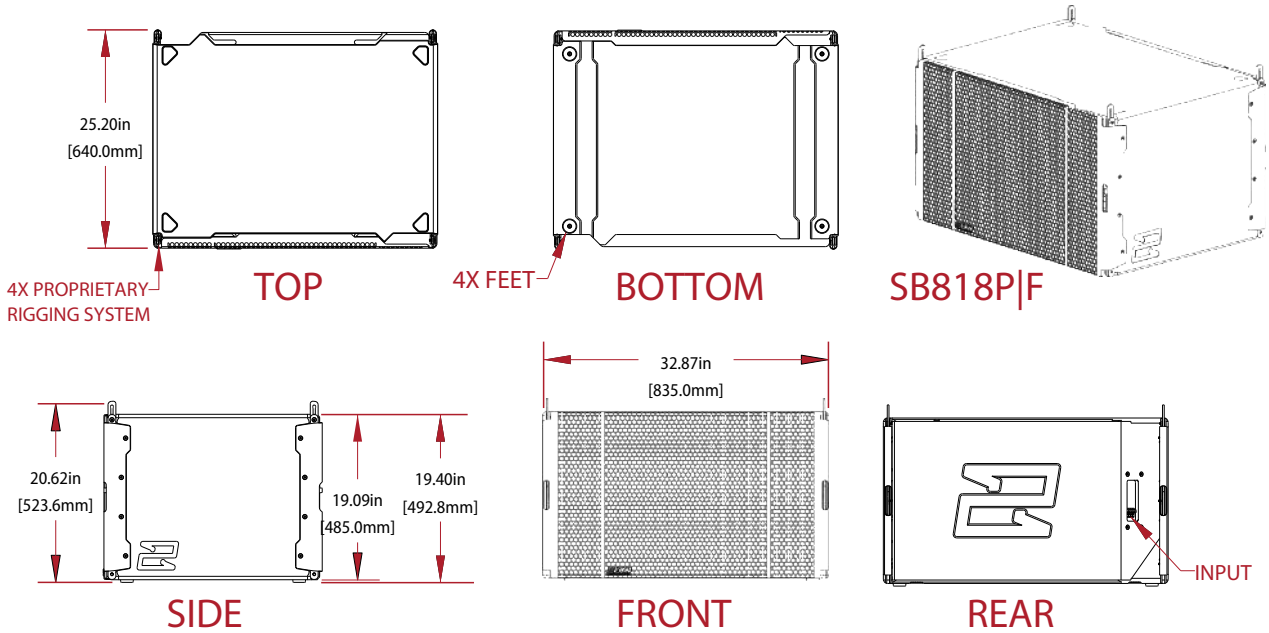
Part Numbers:	Black	White
SB818P-F	2070134-90	2070180-90
Accessories		
SB818P GRILLE	2070346-90	2070347-90
KF810P FLYBAR	2070266-90	2070328-90
KF810P ADAPTER	2070352-90	2070360-90

NOTES

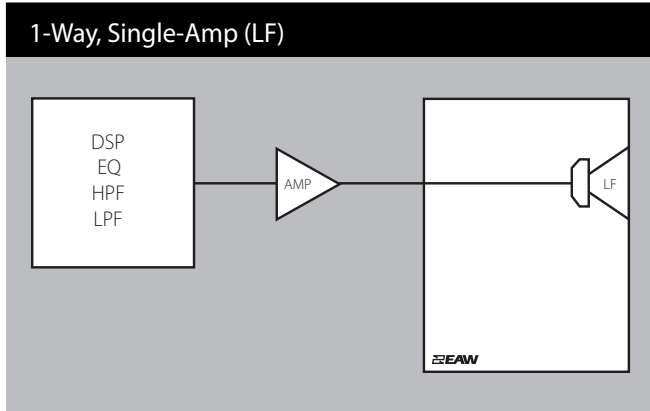
- 1 Calculated max SPL at 1m with 4:1 (12dB) crest factor pink noise. Specified as whole space (free field) for full range loudspeakers, half space for subwoofers.
- 2 Operating Range: Range where the processed Frequency Response stays within -10 dB SPL of the power averaged SPL within this range; measured on the geometric axis. Narrow band dips are excepted.
- 3 Nominal Beamwidth: Design angle for the -6 dB SPL points, referenced to 0 dB SPL as the highest level.
- 4 Accelerated Life Test: Maximum test input voltage applied with an EIA-426B defined spectrum; measured with recommended signal processing and Recommended Protection Filter.
- 5 Nominal Impedance: Selected 4, 8, or 16 ohm resistance such that the minimum impedance point is no more than 20% below this resistance over the Operating Range.

SB818P|F Module

DETAILED DIMENSIONS



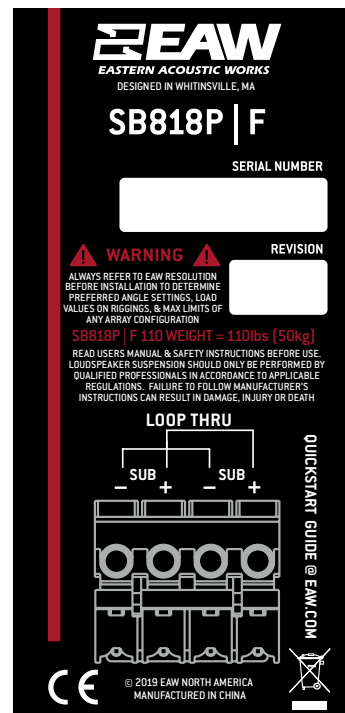
SIGNAL DIAGRAM



Legend

DSP	User-supplied Digital Signal Processor
HPF	High Pass Filter for crossover or specified High Pass Filter
LPF	Low Pass Filter for crossover
LF/MF/HF	Low Frequency / Mid Frequency / High Frequency
AMP	User Supplied Power Amplifier
XVR	Passive LPFs, HPFs, and EQ integral to the loudspeaker

INPUT PANEL



One Main Street
Whitinsville, MA 01588
Tel 800 992 5013 / +1 508 234 6158

www.eaw.com



1903_SB818P|F_SPEC